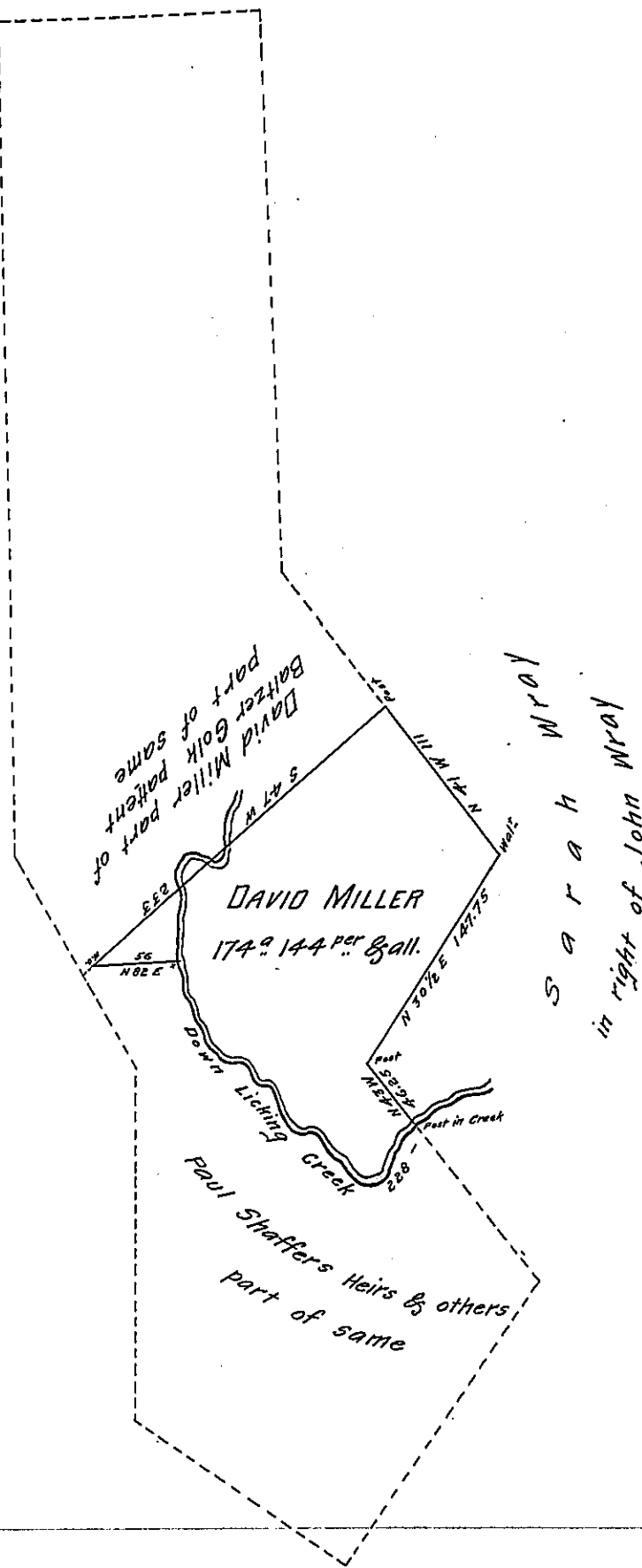


Courses of the Creek		
S	8	E 16
S	30	E 44
East		10
S	33	E 16
N	77	E 8
S	22	E 19
S	45	E 16
East		10
S	45	E 32
East		22
N	22	E 19
N	63	E 15
		<u>227 Rods</u>



A Draught of a tract of Land situate in Montgomery Township (formerly) Hopewell Township Lancaster County Containing 174 Acres 144 perches & allowance being part of a larger tract of 1000 Acres Surveyed Dec<sup>r</sup> 9<sup>th</sup> 1813 In pursuance of a Warrant granted Lewis William & Tho<sup>s</sup> David dated July 21<sup>st</sup> 1738 Resurveyed March 3<sup>rd</sup> 1842 for David Miller

pr

Hugh Auld D. S.

To Jacob Sallade Esq<sup>r</sup>.  
Surveyor General of  
Pa

IN TESTIMONY that the above is a copy of the original remaining on file in the Department of Internal Affairs of Pennsylvania, made conformably to an Act of Assembly approved the 16th day of February, 1833, I have hereunto set my Hand and caused the Seal of said Department to be affixed at Harrisburg, this

eleventh day of June 1908

*Nevoy Houch*  
Secretary of Internal Affairs.